

QSafe Pte Ltd

Noise Monitoring Web Portal User Guide



48 Toh Guan Road East,
#08-155,
Enterprise Hub, Singapore
608586

Table of Contents

QSafe Pte Ltd
Noise Monitoring Web Portal
User Guide

01

About us

02

Login Page

03

Noise Data Log
Report

04

Noise Graphical
Report

05

NMS Location Map

06

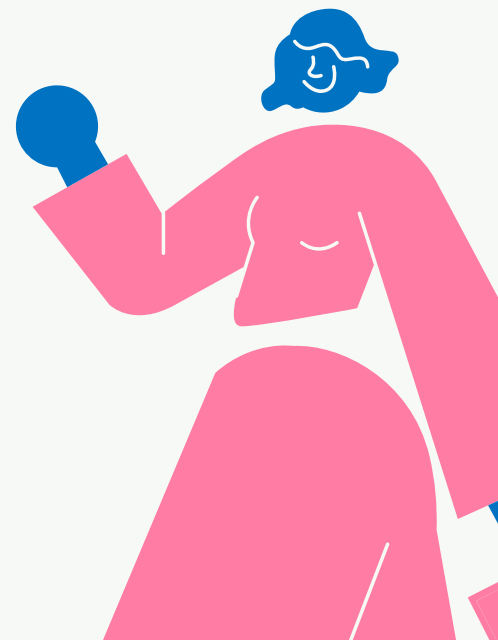
NMS Device Info

07

Mobile Application

08

Contact and
Support

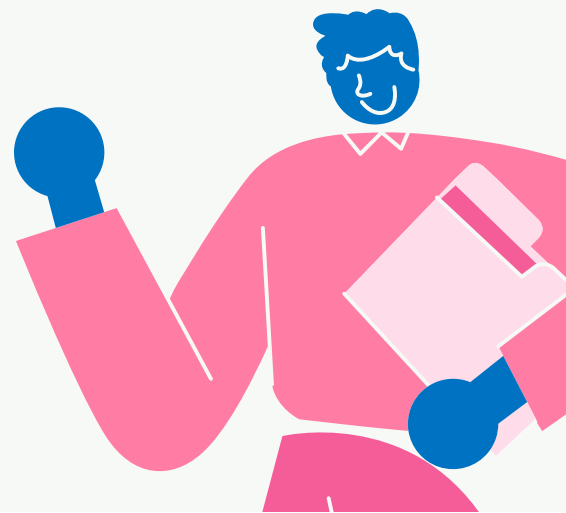


About Us

Qsafe Pte Ltd was inaugurated in the year 2016 (Formally known as Qsafe Consultants & Services established in Year 2014). The Company is one of the leading monitoring & measurement service providers in Singapore. Our services cover the following areas in the various sectors (including Construction , Marine , Manufacturing , Semiconductor , Offshore , petrochemical , Pharmaceuticals, etc.).

Our Services

- Workplace Noise monitoring.
- Personal Noise monitoring.
- ACMV Noise Assessment Clarification.
- Noise Impact Assessment.
- Boundary Noise Monitoring.
- On-Board Ship Noise & Vibration Survey.
- Industrial Hygiene air Monitoring.
- Indoor-air quality Assessment.
- Illumination Survey.
- Audiometric examination.
- Supply of Industrial Safety Professional.
- Settlement Monitoring
- Tilt Monitoring
- Vibration Monitoring
- Environmental Impact Assessment
- Traffic Noise Assessment for TOP
- Sales& Rental of Real Time Noise Monitoring System
- Sales& Rental of Real Time Vibration Monitoring System
- Sales & Rental of Portable measuring Instruments
- CCTV Monitoring Services

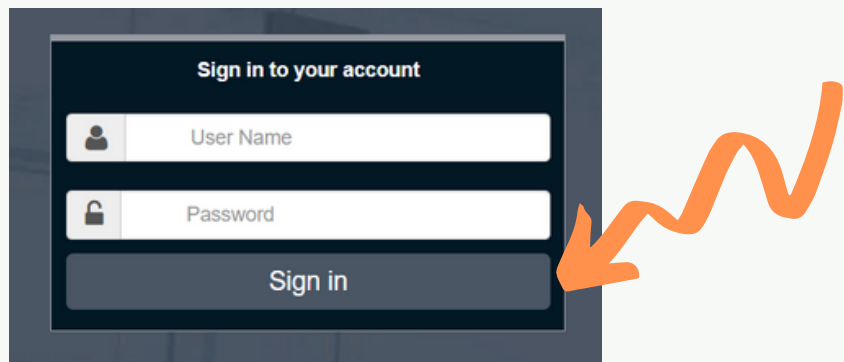


Login Page

1. Access QSafe Noise Monitoring Web Portal by using the URL <https://qsafe.trackmaster.in/>



2. Login to the Portal by enter the Username and Password assigned to you



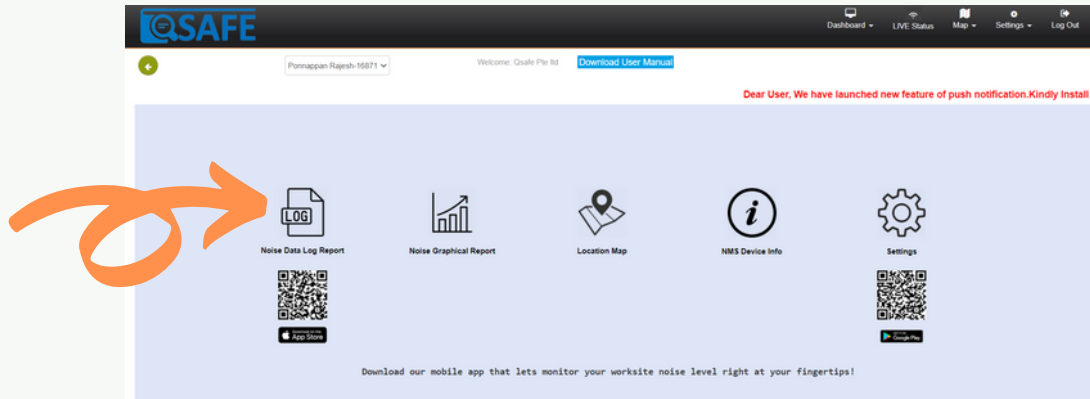
If you have lost the User ID/Password or wish to reset the Password, please kindly email to sales@qsafe.com.sg for assistance.



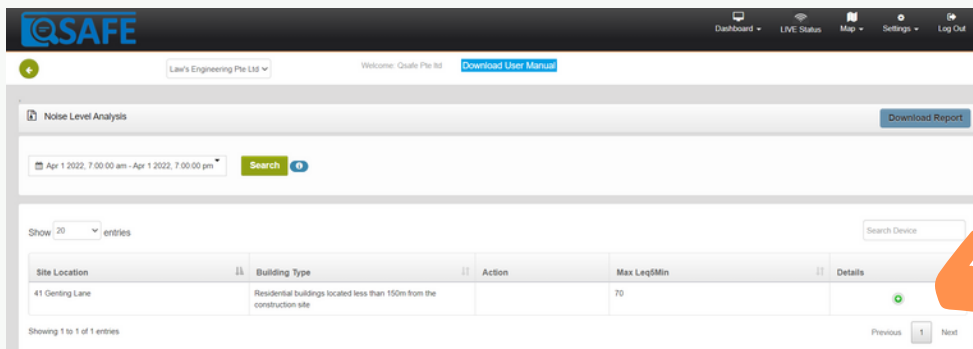
Noise Data Log Report

View the Real Time Noise Readings

Step 1: Click **Noise Data Log Report** in Dashboard



Step 2: Click **+** button that you wished to view the **real time noise data**



Real Time Noise Data

Day	Time	00	05	10	15	20	25	30	35	40	45	50	55	1 HR Leq	12 HR Leq	Current Dose(%)	8hr Leq
7:00		52.0	54.4	55.8	55.4	52.7	51.4	52.0	52.0	52.8	53.2	53.8	54.6	53.6			
8:00		55.4	58.9	61.0	61.1	61.3	60.8	60.6	66.1	71.3	66.9	61.6	61.6	64.3			
9:00		62.2	67.2	72.4	67.3	62.4	62.8	62.4	61.5	61.7	62.5	62.5	61.8	65.5			
10:00		61.8	62.1	62.0	62.9	68.0	68.6	68.6	68.0	64.2	64.4	65.2	66.4	66.1			
11:00		65.0	68.5	68.7	64.3	62.7	62.6	64.4	64.6	62.2	59.4	58.0	58.6	64.5			
12:00		59.0	57.8	56.1	56.6	56.6	56.2	56.8	56.5	56.0	57.3	61.4	63.2	58.5			
13:00		62.2	65.0	64.3	62.0	62.8	63.5	62.9	61.2	61.2	67.4	68.9	70.0	65.3			
14:00		69.6	68.4	74.1	69.0	62.2	63.1	63.6	61.4	60.9	61.3	61.1	61.6	67.1			
15:00		62.8	64.8	63.8	62.8	65.0	64.5	62.6	62.0	62.8	63.1	62.4	62.2	63.3			
16:00		63.3	63.9	63.7	62.8	61.8	62.2	65.4	67.2	64.9	63.7	62.9	61.0	63.9			
17:00		61.8	63.3	62.2	61.0	61.1	67.4	71.3	65.0	63.2	64.7	63.0	64.2	65.2			
18:00		63.9	61.8	61.8	60.9	64.6	65.2	61.2	60.4	60.0	59.8	58.0	54.3	61.8	64.3	29.4	
Friday, 01 April 2022																	

Step 3: Choose the **Date Range and Search** that you wished to view the noise data log report for the selected period.

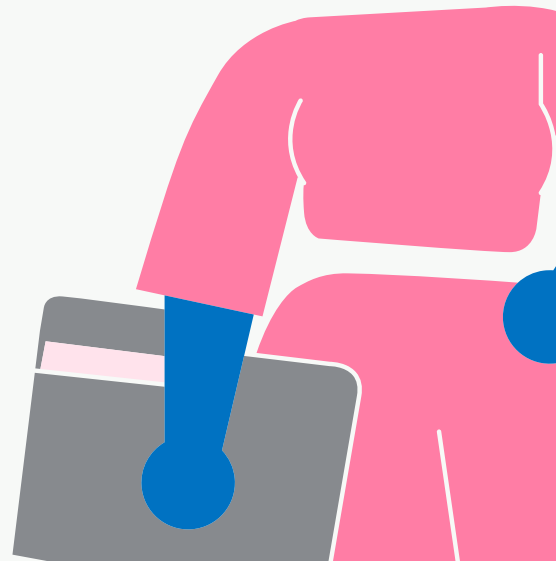
The screenshot shows the 'Noise Level Analysis' interface. At the top, there is a date range selector set to 'Apr 1 2022, 7:00:00 am - Apr 1 2022, 7:00:00 pm' with a search button. Below this is a calendar view for April 2022, with the 1st highlighted. An orange arrow points to the 'Apply' button in the calendar. The main area displays a table of noise data for '41 Genting Lane'.

Day	Time	LEQ 5 mins										1 HR Leq	12 HR Leq	current Dose(%)	Allowable(Max Leq5mins)		
		00	05	10	15	20	25	30	35	40	45					50	55
Friday, 01 April 2022	7:00	55.4	58.9	61.0	61.1	61.3	60.8	60.6	66.1	71.3	66.9	61.6	61.6	64.3			
	8:00	62.2	67.2	72.4	67.3	62.4	62.8	62.4	61.9	61.7	62.5	62.5	61.8	65.9			
	9:00	61.8	62.1	62.0	62.9	68.0	68.6	69.6	68.0	64.2	64.4	65.2	66.4	66.1			
	10:00	61.8	62.1	62.0	62.9	68.0	68.6	69.6	68.0	64.2	64.4	65.2	66.4	66.1			
	11:00	61.8	62.1	62.0	62.9	68.0	68.6	69.6	68.0	64.2	64.4	65.2	66.4	66.1			
	12:00	59.0	57.8	56.1	56.9	56.8	56.2	56.8	56.5	56.0	57.3	61.4	63.2	58.5			
	13:00	62.2	65.0	64.3	62.0	62.8	63.9	62.9	61.2	61.2	67.4	68.9	70.0	65.3			
	14:00	69.6	68.4	74.1	69.0	62.2	63.1	63.6	61.4	60.9	61.3	61.1	61.6	67.1			
	15:00	62.8	64.8	63.8	62.8	65.0	64.5	62.6	62.0	62.8	63.1	62.4	62.2	63.3			
	16:00	63.3	63.9	63.7	62.8	61.8	62.2	65.4	67.2	64.9	63.7	62.5	61.0	63.9			
	17:00	61.8	63.3	62.2	61.0	61.1	67.4	71.3	65.0	63.2	64.7	63.0	64.2	65.2			
	18:00	63.9	61.8	61.8	60.9	64.6	65.2	61.2	60.4	60.0	59.8	58.0	54.3	61.8	64.3	29.4	

Download Report

Click **Download Report** to download the report for the selected period.

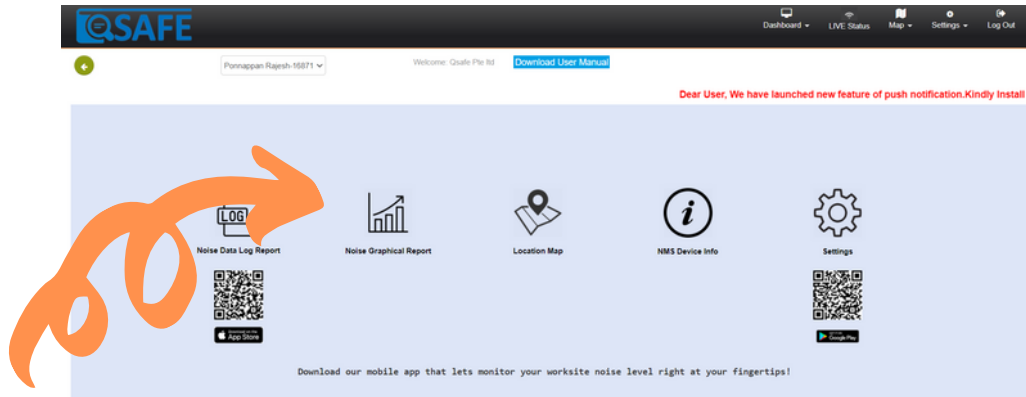
This screenshot is similar to the previous one but highlights the 'Download Report' button in the top right corner with an orange arrow. The data table is also visible.



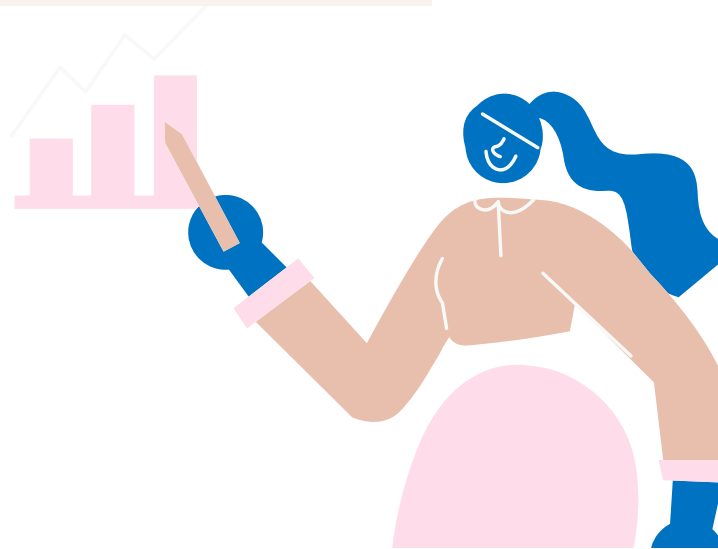
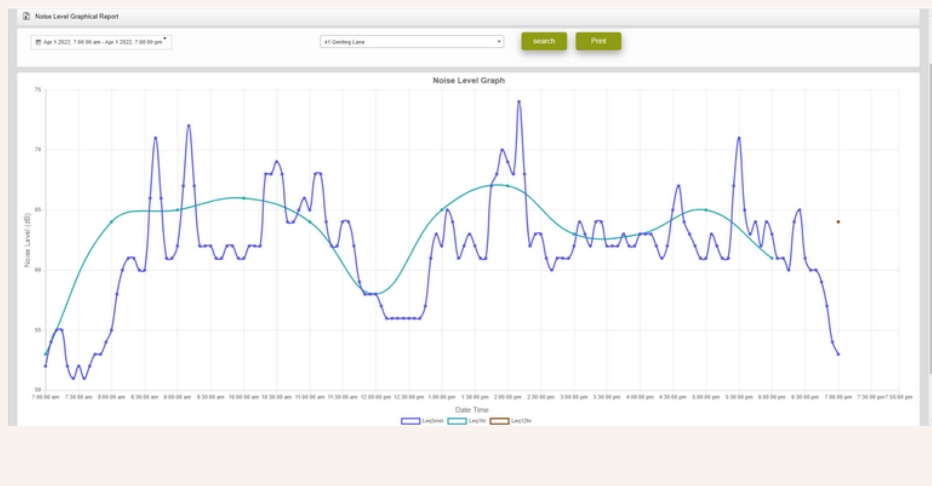
Noise Graphical Report

View the Real Time Noise Graphical Chart

Step 1: Click **Noise Graphical Report** in Dashboard



Real Time Noise Graphical Chart



Step 2: Choose the **Data Range and Search** that you wished to view the noise graphical report for the selected period.



Download Noise Graphical Chart

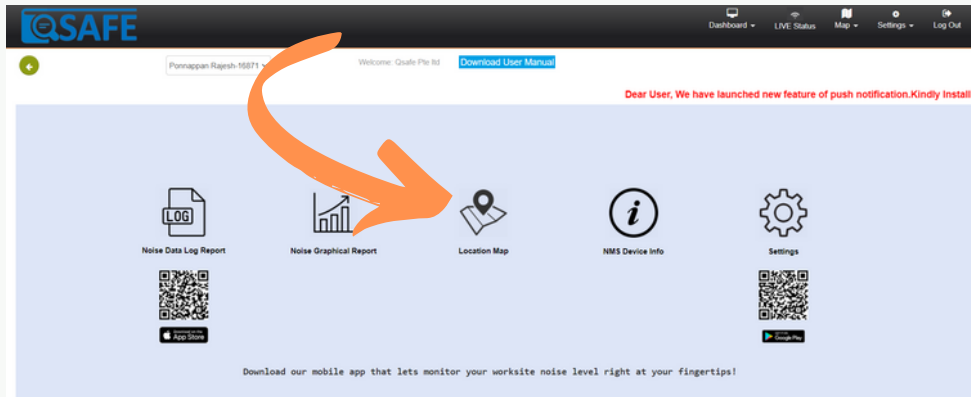
Click **Print** to download the Noise Graphical Chart for the selected period.



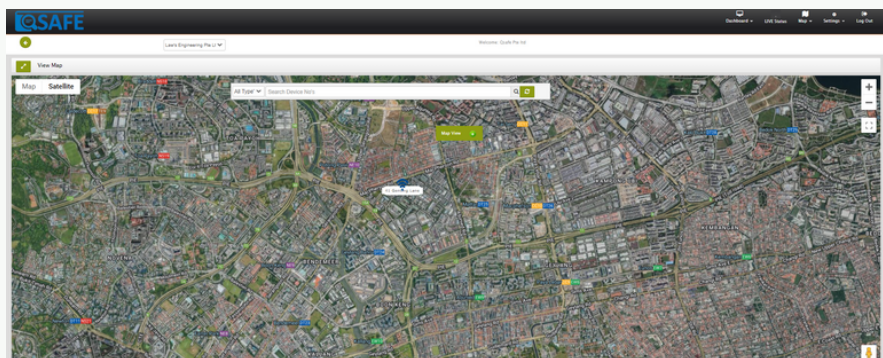
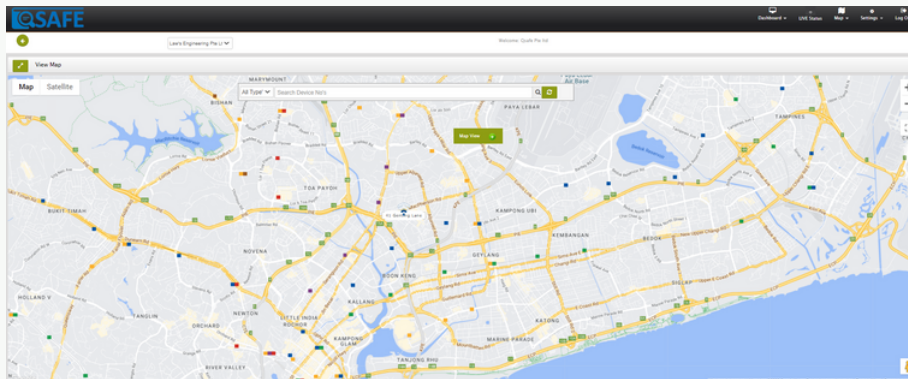
NMS Location Map

View the Location

Step 1: Click **Location Map** in Dashboard



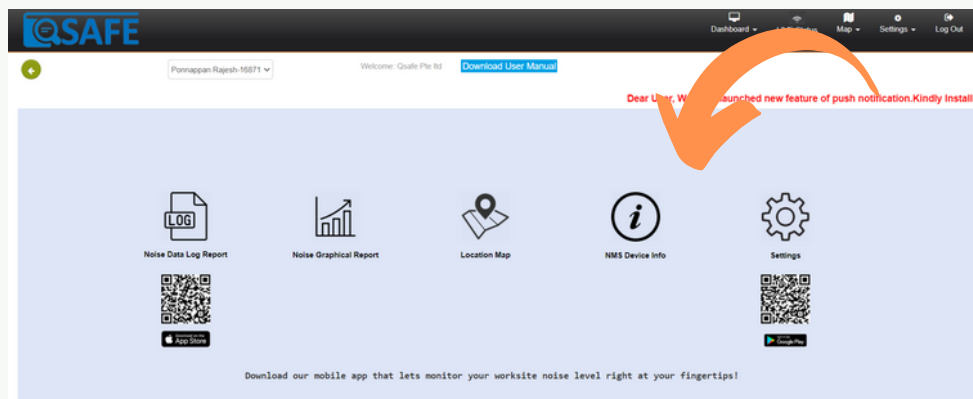
Noise Meter Location will be shown in integrated Google Map.
Location can be viewed in Map view and Satellite view.



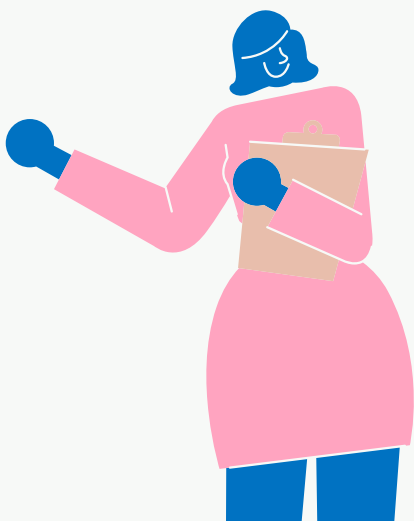
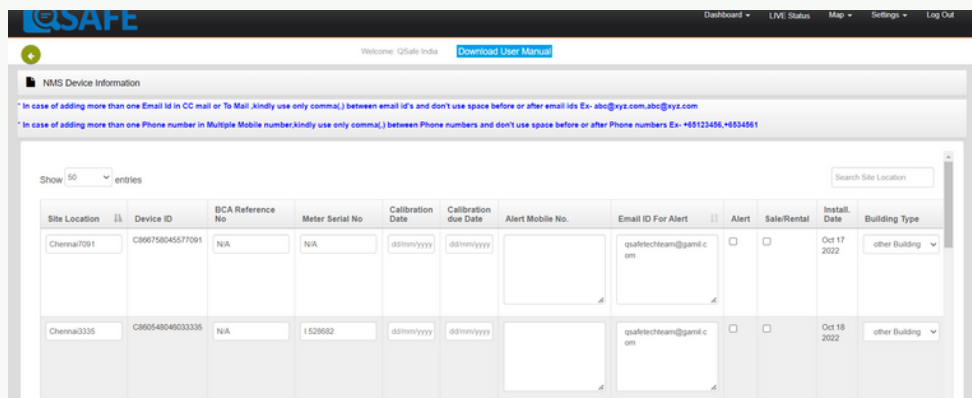
NMS Device Info

To Update Device and Contact Details

Click **NMS Device Info** in Dashboard



Update your Email ID and Contact Number for Real-Time Alerts and Save.



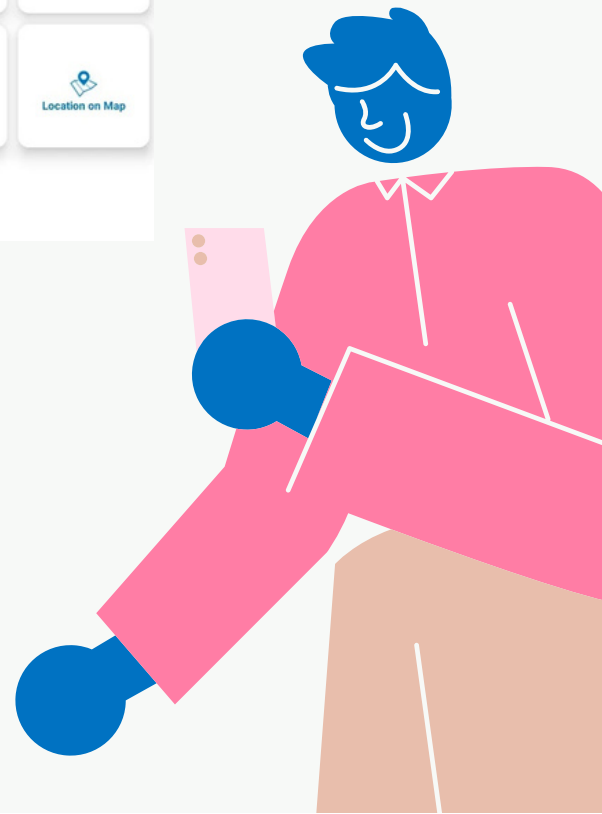
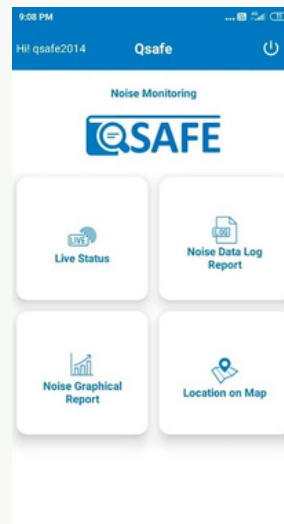
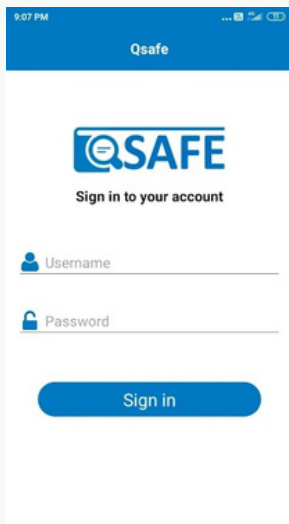
Mobile Application

Download Mobile Application

Step 1: Scan this QR Code or Search Qsafe Noise and Vibration Monitoring in Play Store and App Store.



Step 2: Login with your UserID/Password



Contact and Support

QSafe Pte Ltd
Noise Monitoring Web Portal
User Guide

For any Technical and Service-related queries, please kindly email to sales@qsafe.com.sg for assistance.

Contact

+65 8123 4812,
+65 8031 7614,
sales@qsafe.com.sg

QSafe Pte. Ltd
48 Toh Guan Road East, #08-155,
Enterprise Hub, Singapore
608586
www.qsafe.com.sg

We thank you for your continued support of our services!

